

2024 Iowa Project AWARE Shuttle Schedule

The use of Iowa Project AWARE shuttle services is not required. Due to the high volume of volunteers, support vehicles, and equipment necessary for the event, parking availability at sites along the AWARE route is exceedingly limited. Therefore, the use of personal vehicles on AWARE is strongly discouraged. If personal vehicles are necessary, carpooling amongst volunteers is strongly recommended wherever possible. If the following shuttle schedules do not accommodate your needs, you must make your own arrangements.

SHUTTLE AT YOUR OWN RISK!!!

N-Compass, Inc., Mount Pleasant High School, Grand View University, or any other cooperating agency, organization, or individual are not responsible for lost, stolen, or vandalized items, damage from tree limbs, storms, natural and/or environmental damages, or other acts of God. If you choose to leave your vehicle somewhere, you choose to do so at your own risk.

PRE/POST EVENT SHUTTLE SERVICE – Free

Two shuttle locations will be available for Iowa Project AWARE volunteers on **Sunday, July 7.**

- **Des Moines Area Shuttle - Shuttle leaves at 10:30 am**
 - Meet Sunday, July 7 at 10:00 am at Grand View University (parking lot is highlighted in green on map on page 2).
 - Shuttle will return to Des Moines Friday afternoon, July 12.
- **Mount Pleasant Area Shuttle - Shuttle leaves at 12:30 pm**
 - Meet Sunday, July 7, at 12:00 pm at Mount Pleasant High School (map on page 3)
 - Shuttle will return to Mt. Pleasant Friday afternoon, July 12.

DAILY SHUTTLE SERVICE – Free – *Daily shuttle departs daily 30 minutes after bus delivers volunteers from the river to the campground.*

Due to the exceedingly limited parking availability at sites along the AWARE route, the use and daily shuttling of personal vehicles on Iowa Project AWARE is strongly discouraged. This shuttle service will take participants back to the previous night's camping location only. The daily shuttle is needed Wednesday, July 10 only. Pre-registration for daily shuttles is not available – to use a shuttle you must sign up onsite.

PLEASE NOTE:

- Daily shuttle will be necessary only Wednesday, July 10 as we will move camps.
- To join the AWARE group during the week, arrive at the following locations by 7:00am:
 - **Monday-Wednesday, July 8-10** - Arrive at Lake Darling State Park (Brighton) by 7:00am. If you are leaving a personal vehicle, please park it in the Designated Parking Area.
 - **Thursday-Friday, July 11-12** - Arrive at Water Works Area Oakland Mills Park (Mt Pleasant) by 7:00am. If you are leaving a personal vehicle, please park it in the Designated Parking Area.

Grand View University Shuttle Location Map

Grand View University

1200 Grandview Avenue, Des Moines

AWARE parking is in the lot South of the Krumm Business Center
in the NE corner of Morton Ave. and E 13th St.



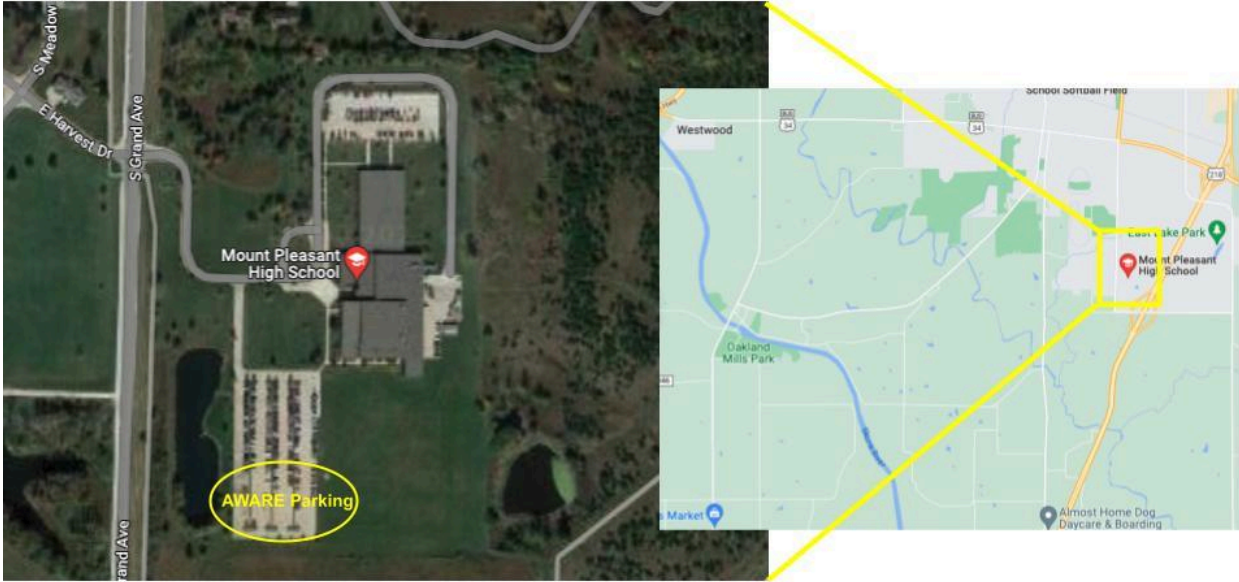
Grand View University is not responsible for lost, stolen, or vandalized items, damage from tree limbs, storms, natural and/or environmental damages, or other acts of God. If you choose to leave your vehicle at this location, you choose to do so at your own risk.

Mount Pleasant Shuttle Location Map

Mount Pleasant High School

2104 S Grand Ave, Mt Pleasant

AWARE parking is in the southern portion of the south lot.



Mount Pleasant High School is not responsible for lost, stolen, or vandalized items, damage from tree limbs, storms, natural and/or environmental damages, or other acts of God. If you choose to leave your vehicle at this location, you choose to do so at your own risk.